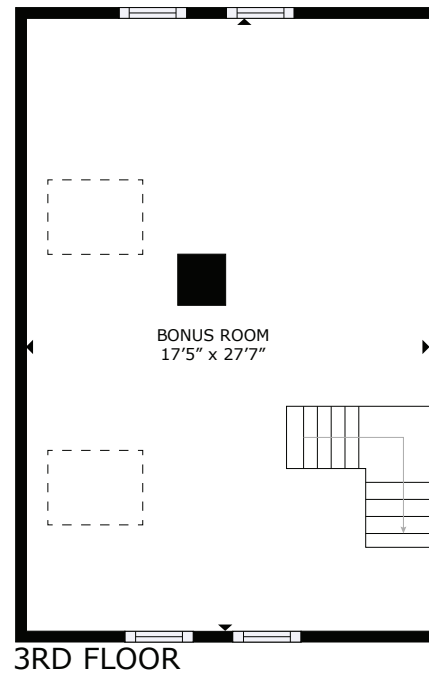
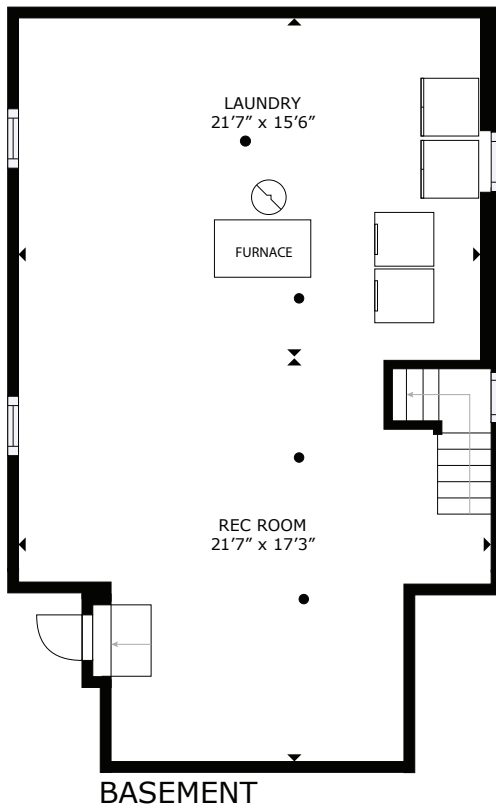
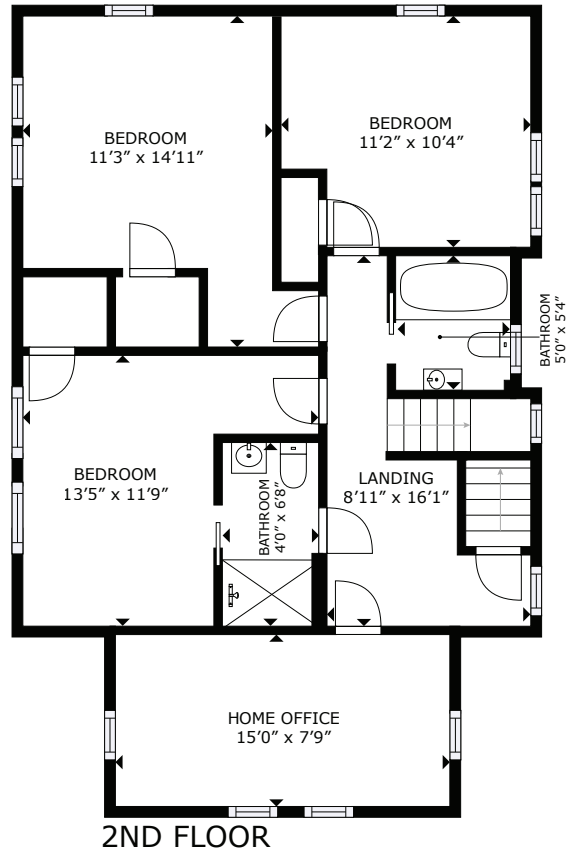
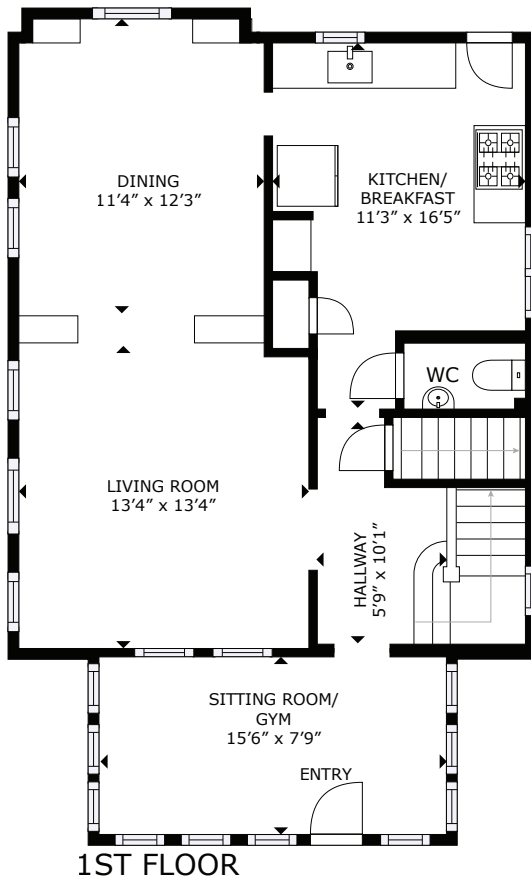


83 Maynard St - Roslindale, MA



GROSS INTERNAL AREA
 BASEMENT: 650 sq. ft, 1ST FLOOR: 759 sq. ft,
 2ND FLOOR: 744 sq. ft, 3RD FLOOR: 501 sq. ft
 TOTAL: 2,654 sq. ft

SIZES AND DIMENSIONS ARE APPROXIMATE, ACTUAL MAY VARY.

This floor plan is an approximation, and is intended for marketing purposes only. This information has been provided with the sellers permission. © 2023 Glasshouse Media Inc.