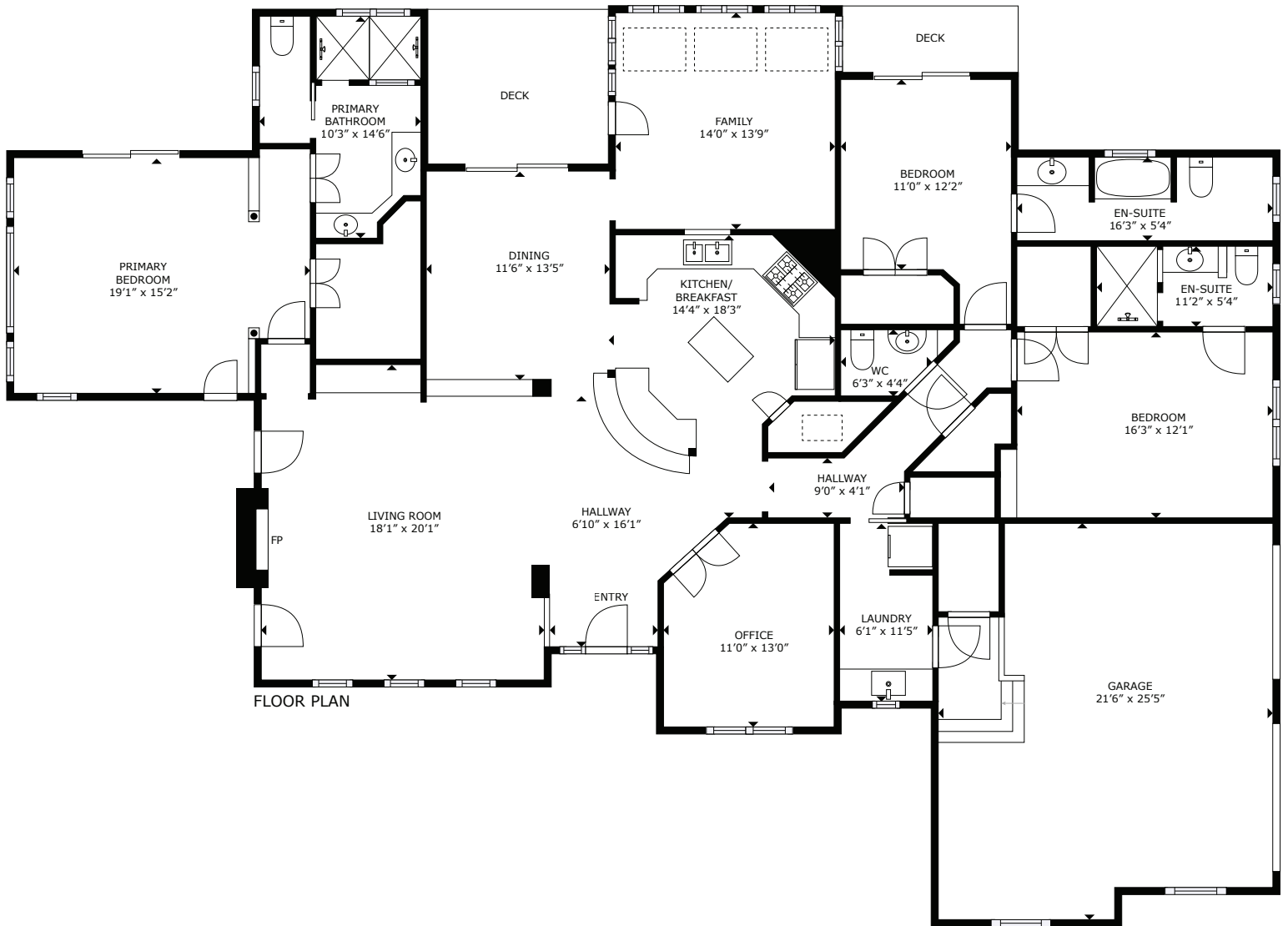


# 565 Howard Street - Northborough, MA



GROSS INTERNAL AREA  
FLOOR PLAN: 2,501 sq. ft  
EXCLUDED AREA: GARAGE : 527 sq. ft

SIZES AND DIMENSIONS ARE APPROXIMATE, ACTUAL MAY VARY.

This floor plan is an approximation, and is intended for marketing purposes only. This information has been provided with the sellers permission. © 2023 Glasshouse Media Inc.