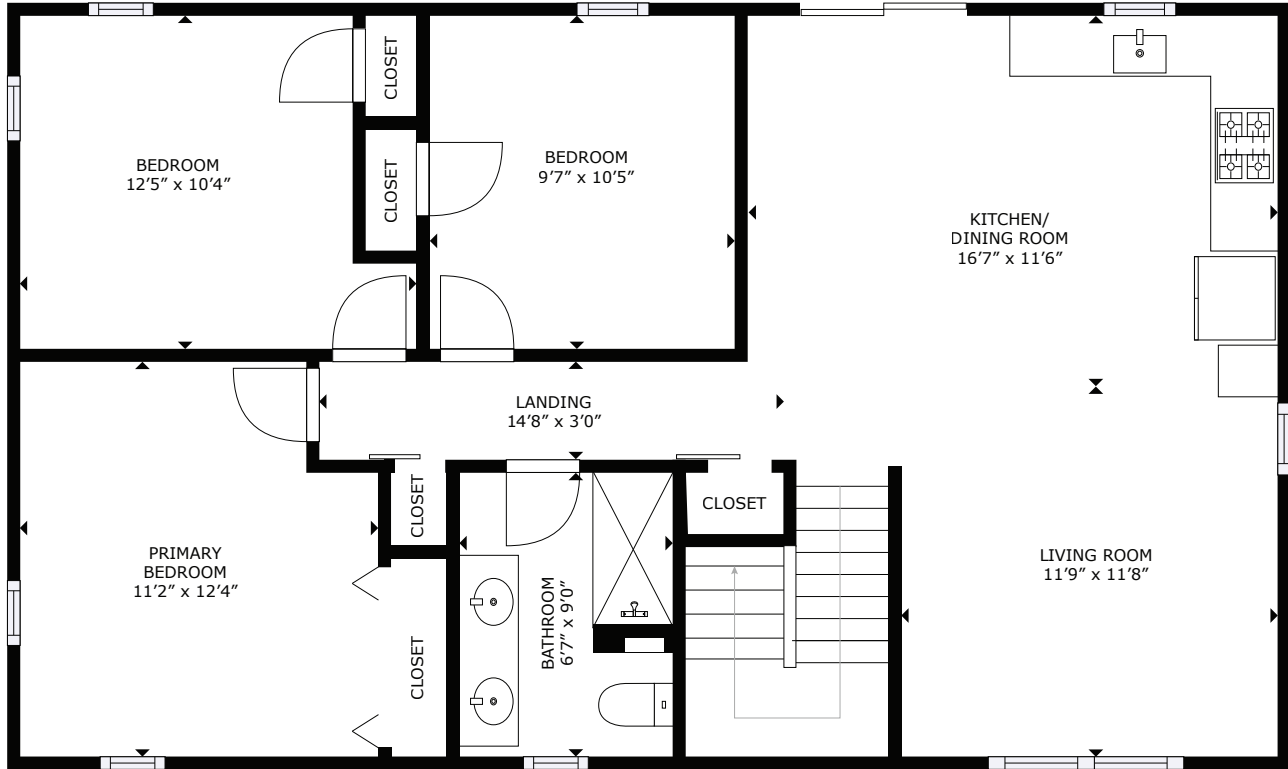
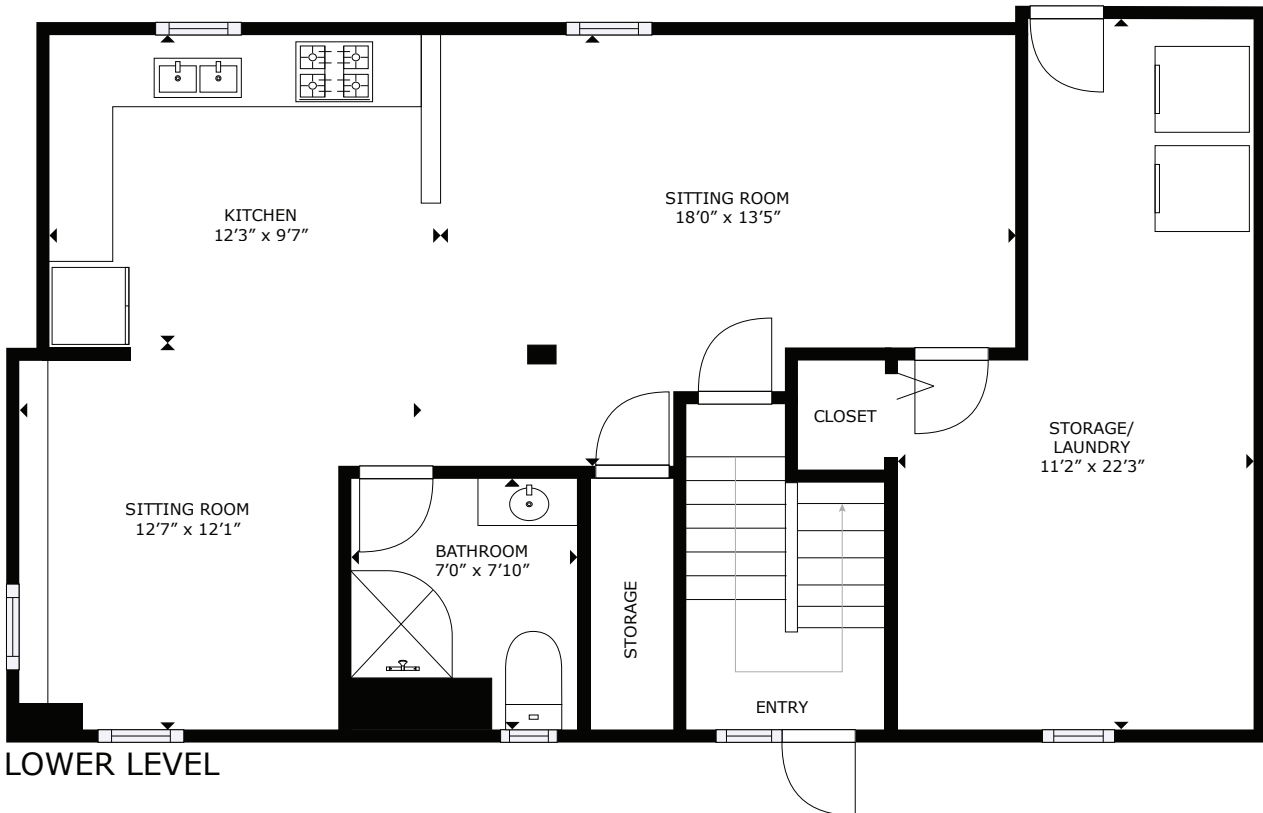


15 Cove St - Riverside, RI



MAIN LEVEL



LOWER LEVEL

GROSS INTERNAL AREA
LOWER LEVEL: 837 sq. ft, UPPER LEVEL: 917 sq. ft
TOTAL: 1,754 sq. ft

SIZES AND DIMENSIONS ARE APPROXIMATE, ACTUAL MAY VARY.

This floor plan is an approximation, and is intended for marketing purposes only. This information has been provided with the sellers permission. © 2024 Glasshouse Media Inc.