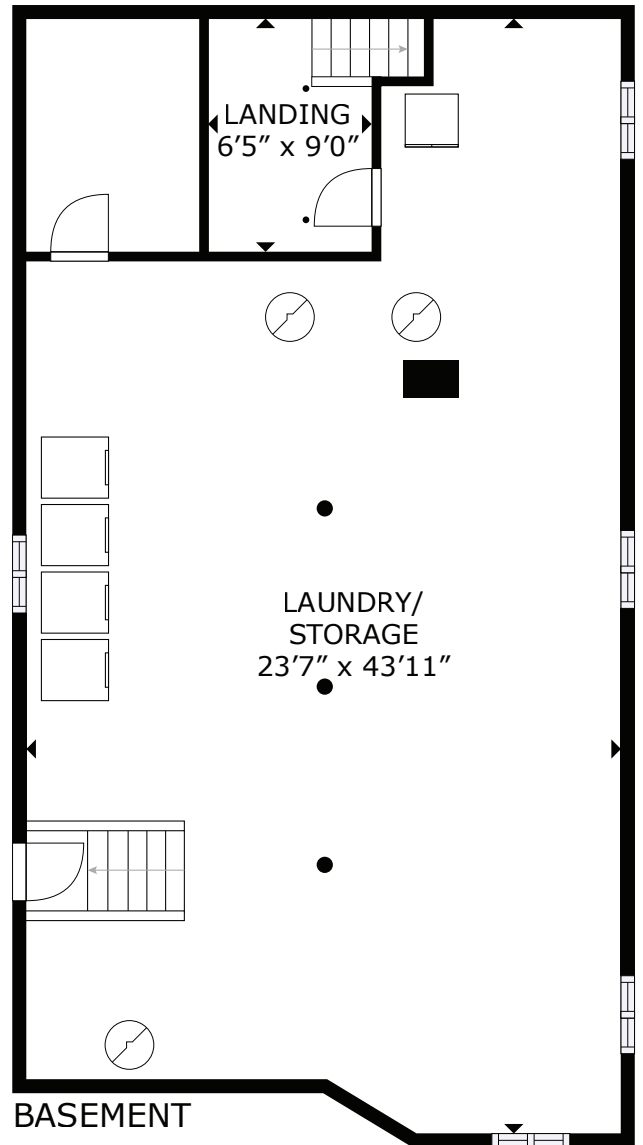
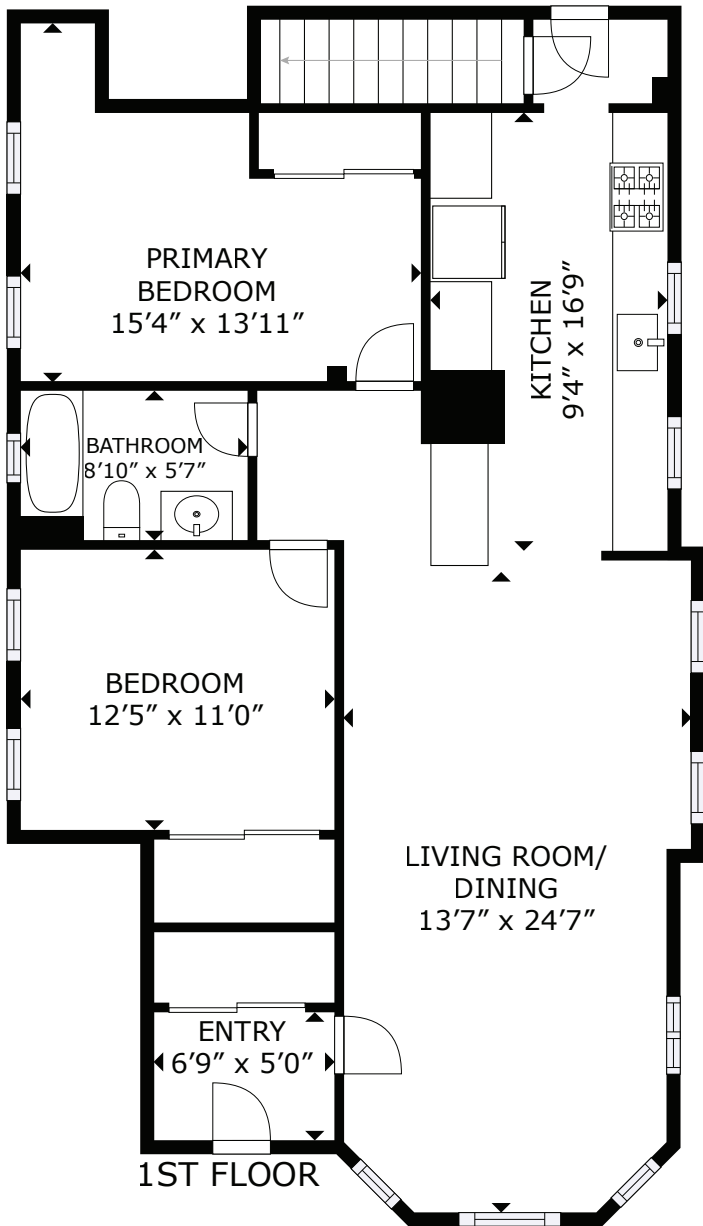


# 97 Hull St Unit 1 - Belmont, MA



GROSS INTERNAL AREA  
BASEMENT: 927 sq. ft, 1ST FLOOR: 1,072 sq. ft  
TOTAL: 1,999 sq. ft  
SIZES AND DIMENSIONS ARE APPROXIMATE, ACTUAL MAY VARY.

This floor plan is an approximation, and is intended for marketing purposes only. This information has been provided with the sellers permission. © 2023 Glasshouse Media Inc.