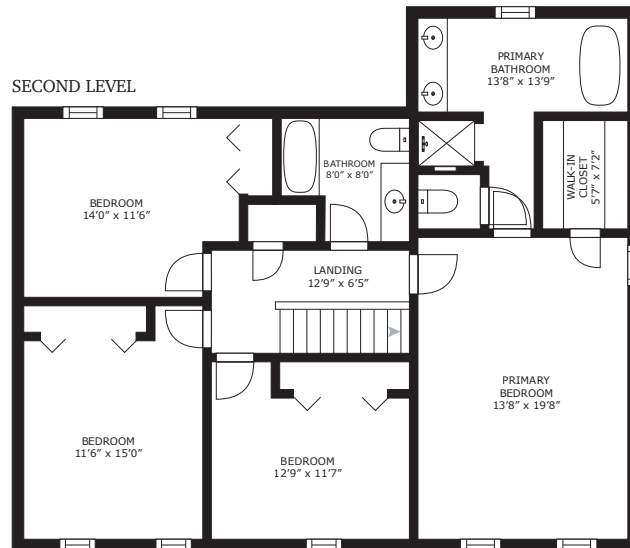
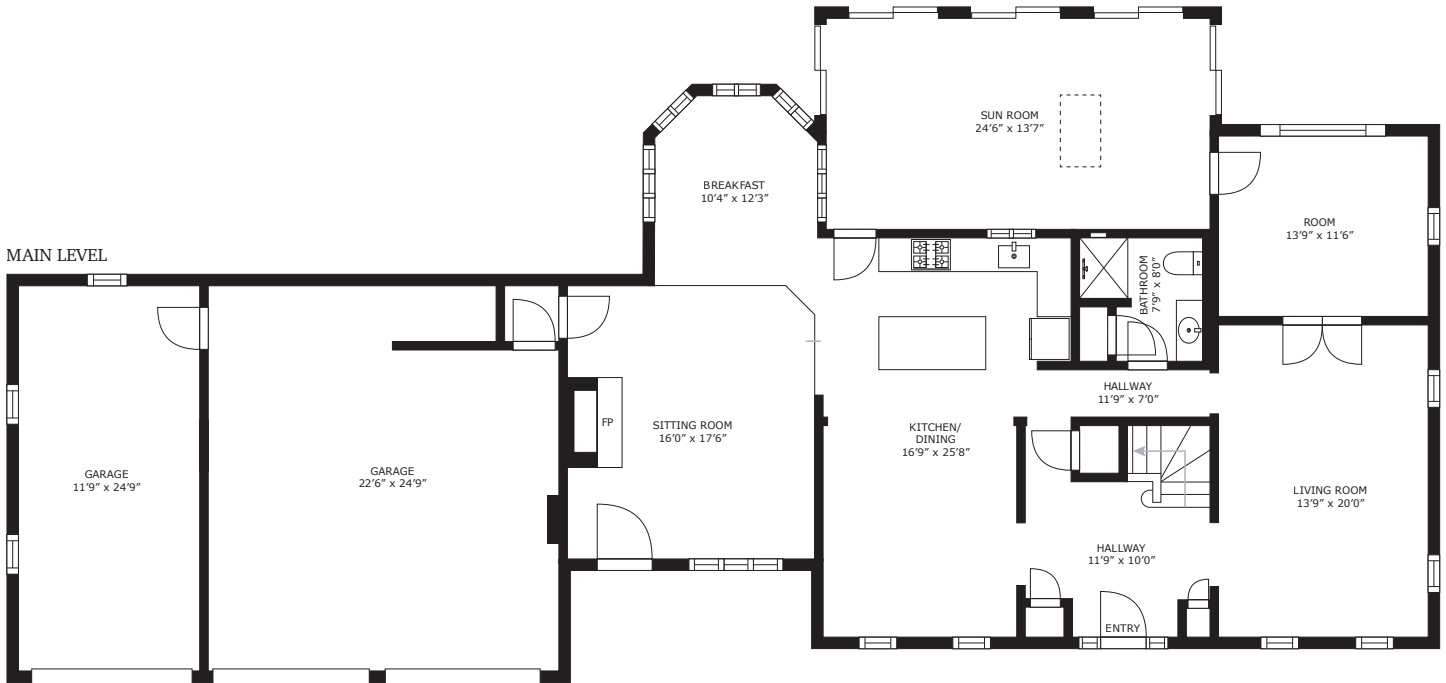


188 Stearns Rd - Marlborough, MA



GROSS INTERNAL AREA
 LOWER LEVEL: 1,409 sq. ft, MAIN LEVEL: 1,900 sq. ft
 2ND LEVEL: 1,157 sq. ft, UPPER LEVEL: 537 sq. ft
 TOTAL: 5,003 sq. ft
 EXCLUDED AREA: GARAGE: 860 sq. ft
 REDUCED HEADROOM BELOW: 1.5 M 54 sq. ft
 SIZES AND DIMENSIONS ARE APPROXIMATE, ACTUAL MAY VARY



Glasshouse Media
 www.glasshousemedia.com
 877.741.5637



James Giguere
 Aprilian Homes Team
 888-733-7089

james@aprilianhomes.com